

# Midea 2~8 °C Biomedical Refrigerator

Model MC-5L416 / MC-5L756 / MC-5L1006



Biomedical

Suitable to store vaccines, medicines and laboratory products at 2°C to 8°C temperature range. Application could be found at pharmacies, pharmaceutical factories, hospitals, CDC, clinics, laboratories. Leading technologies for Safer storage and Higher temperature stability.



MC-5L416

MC-5L756

MC-5L1006

### Safer Storage

Superior Temp. uniformity & Precise control

- Microcomputer temperature control.
- Dual display, temperature & Humidity
- Temperature accuracy 0.1°C
- Temperature variation  $\leq 2^\circ\text{C}$
- Temperature uniformity  $\pm 1.5^\circ\text{C}$ .
- USB port, temp. record traceable.
- Backup battery.
- Audible & visual alarm systems.

### Advanced Technologies

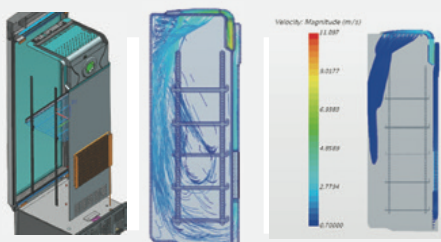
Reliable & stable performance

- International famous inverter compressor.
- Top cooling system.
- DC turbo fan.
- Built-in air duct.
- LBA forming technology.
- Micro-channel condenser.
- Patented D+ heat exchange technology, high efficiency and energy saving.

### Humanized Design

Friendly for daily use

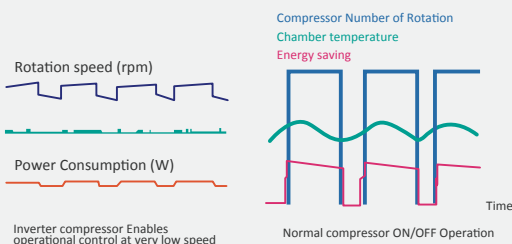
- Electric heating glass door.
- Door self-close.
- Adjustable shelves with label holder.
- Porthole.
- Adjustable LED light.
- Wide voltage range design.



### Top cooling system

Strong cooling airflow from the top to the bottom, works as an air curtain to block the external hot air from entering the refrigerator when door is opening, so as to prevent the temperature in the cabinet from rising rapidly, also contributes better temperature uniformity performance.

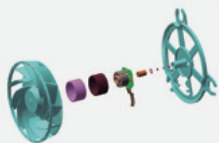
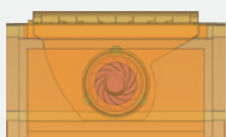
- Improves temperature uniformity performance by 40%.
- Max interior temperature difference  $\pm 1^\circ\text{C}$ .
- Prevent temperature rising rapidly when door is opening.
- Energy consumption 47% lower than similar sized normal pharmacy refrigerator.



### Inverter Compressor

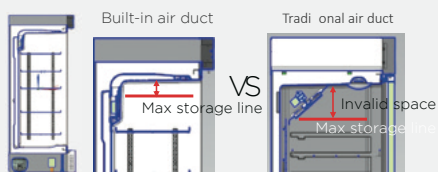
- Improve cooling performance.
- Reduce energy consumption by 15%.
- Decrease noise level.
- 20% higher quick-cooling ability.
- Interior temperature variation within  $2^\circ\text{C}$ .





### DC Turbo Fan

↓ Decrease noise level by 8%.  
 Integrated DC Turbo Fan works with smaller vibration and higher efficiency.  
 Safer for daily use.  
 No strong electric component in chamber, safer & more reliable.



### Built-in air duct

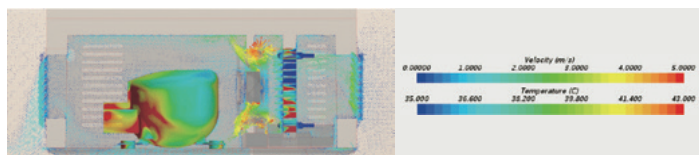
↑ Increase the effective interior space by 10%.  
 ↓ Less interior space occupancy.  
 Built-in air duct plus the Top cooling design, ensure temperature in the top of chamber is cool enough for storage.

### ■ Dual Display

Display real-time Temperature & Humidity.



### ■ Micro-channel condenser



### ■ LBA Forming Technology

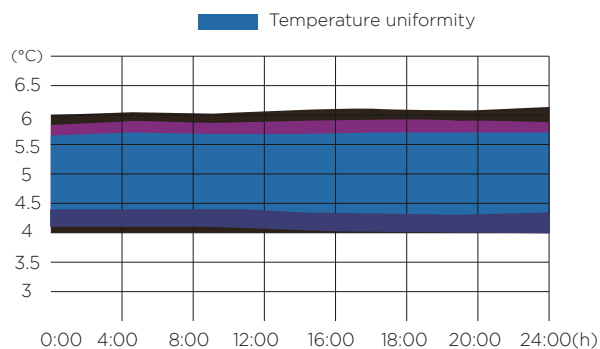
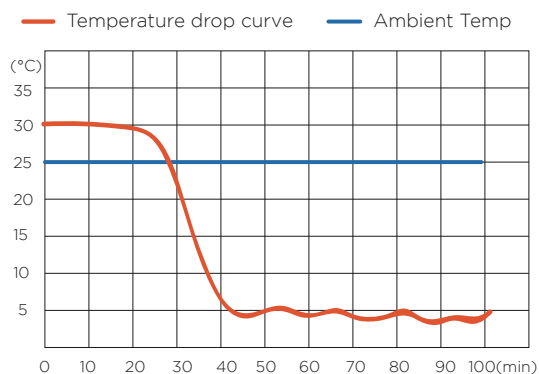
The world's leading fourth generation foaming agent

More uniform density, Better insulation, more energy-saving.

More reasonable foaming layer design, larger interior storage space.

Compressor overheating protection, effectively improving the service life of the core part.  
 Powerful heat dissipation for condenser, heat exchange capacity increase by more than 20% than common copper tube fin condenser of other suppliers.

### ■ Typical Performance Characteristics at 25°C Ambient





Item	Model No.	MC-5L416	MC-5L756	MC-5L1006
<b>Dimensions</b>	Load capacity (40HQ)	47	38	21
	Fridge Storage Volume(L)	416	756	1006
	Product Dimensions(mm)(wxdxh)	690*653*1920	970*808*1920	1220*808*1920
	Interior Dimensions(mm)(wxdxh)	595*514*1343	880*634*1354	1130*634*1354
	Net/Gross Weight	88/100	140/170	220/260
<b>Technical data</b>	Cooling Type	Forced air cooling	Forced air cooling	Forced air cooling
	Defrost type	No frost	No frost	No frost
	Climate Class	N	N	N
	Refrigerant/Amount(g)	R600/36g	R600a/48g	R600a/60g
	Compressor type	Inverter	Inverter	Inverter
	Sensor Qty	6	6	6
<b>Product Performance</b>	Temperature Range	2 ~ 8°C	2 ~ 8°C	2 ~ 8°C
	Temperature uniformity/°C	2	3	3
	Temperature volatility/°C	2	2	2
	Temperature Accuracy	0.1	0.1	0.1
<b>Control</b>	Controller	Microprocessor	Microprocessor	Microprocessor
	Display	LED(Temp. &Humidity)	LED(Temp. &Humidity)	LED(Temp. &Humidity)
<b>Electrical data</b>	Power Supply	220~240V /50~60 HZ	220~240V /50~60 HZ	220~240V /50~60 HZ
	Rated Power(W)	260	320	350
<b>Alarms</b>	Power Failure Alarm	Y	Y	Y
	Sensor Failure Alarm	Y	Y	Y
	Environment Temp. Alarm	Y	Y	Y
	Door ajar Alarm	Y	Y	Y
	High Temperature Alarm	Y	Y	Y
	Low Temperature Alarm	Y	Y	Y
	Remote Alarm	Optional	Optional	Optional
<b>Accessories</b>	Shelves/Drawers Qty	5	10	10
	Anti-condensation Door	Electrical heating	Electrical heating	Electrical heating
	Self-lock	Y	Y	Y
	Label Card Holder	Y	Y	Y
	Cable Port	Y	Y	Y
	Castors/type	4/Omni-directional	4/Omni-directional	4/Omni-directional
	USB	Y	Y	Y
	RS-485 Port	Y	Y	Y
	Printer	Optional	Optional	Optional
	Backup Battery	Y	Y	Y
	Backup Battery endurance	24h	24h	24h

All specifications are subject to change without prior notice.